

FY25 Cancellations - Year to Date Fleetwide Snapshot



Scheduled Sailings

49,638

FY24: 49,356 (+282 +0.6%)

Actual Sailings

49,227

FY24: 48,691 (+536 +1.1%)

Cancelled Sailings

411

FY24: 665 (-254 -38.2%)

Scheduled Sailings Cancelled

0.8%

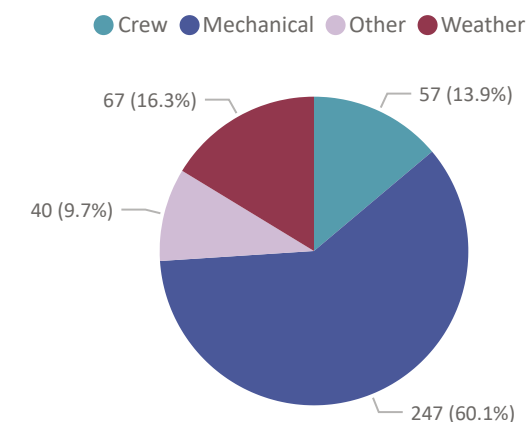
FY24: 1.3% (-38.5%)

Cancellations by Route & Cause

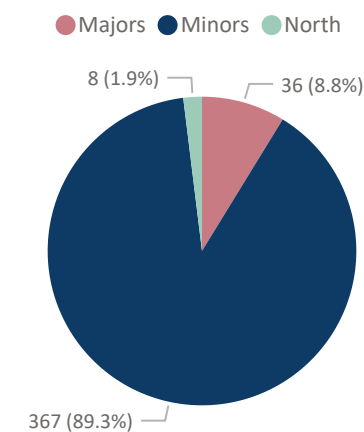
Route	Crew		Mechanical		Other		Weather		Total	
	Sailings	%	Sailings	%	Sailings	%	Sailings	%	Sailings	%
☐ Majors	0	0.0%	20	0.3%	12	0.2%	4	0.1%	36	0.5%
01 Tsawwassen - Swartz Bay	0	0.0%	13	0.5%	2	0.1%	4	0.2%	19	0.8%
02 Horseshoe Bay - Nanaimo	0	0.0%	3	0.2%	9	0.6%	0	0.0%	12	0.8%
03 Horseshoe Bay - Langdale	0	0.0%	4	0.3%	1	0.1%	0	0.0%	5	0.3%
30 Nanaimo - Tsawwassen	0	0.0%	0	0.0%	0	0.0%	0	0.0%	0	0.0%
☐ Minors	57	0.1%	221	0.5%	28	0.1%	61	0.1%	367	0.9%
04 Swartz Bay - Fulford Harbour	0	0.0%	0	0.0%	0	0.0%	0	0.0%	0	0.0%
05 Swartz Bay - Southern Gulf Islands	10	0.3%	4	0.1%	4	0.1%	0	0.0%	18	0.6%
06 Crofton - Vesuvius	0	0.0%	0	0.0%	2	0.1%	0	0.0%	2	0.1%
07 Earls Cove - Saltery Bay	0	0.0%	0	0.0%	0	0.0%	0	0.0%	0	0.0%
08 Horseshoe Bay - Snug Cove	5	0.2%	52	1.9%	14	0.5%	0	0.0%	71	2.6%
09 Tsawwassen - Southern Gulf Islands	0	0.0%	0	0.0%	0	0.0%	0	0.0%	0	0.0%
12 Brentwood Bay - Mill Bay	16	1.0%	0	0.0%	2	0.1%	2	0.1%	20	1.2%
13 Langdale - Gambier Island - Keats Landing	0	0.0%	0	0.0%	0	0.0%	0	0.0%	0	0.0%
17 Little River - Powell River	0	0.0%	0	0.0%	0	0.0%	0	0.0%	0	0.0%
18 Powell River - Blubber Bay	2	0.1%	51	3.5%	2	0.1%	2	0.1%	57	3.9%
19 Nanaimo Harbour - Gabriola	9	0.2%	17	0.4%	2	0.0%	0	0.0%	28	0.7%
20 Chemainus - Thetis - Penelakut	4	0.1%	6	0.2%	0	0.0%	0	0.0%	10	0.4%
21 Buckley Bay - Denman West	1	0.0%	53	1.6%	0	0.0%	0	0.0%	54	1.7%
22 Denman East - Hornby Island	2	0.1%	30	1.4%	0	0.0%	6	0.3%	38	1.7%
23 Campbell River - Quathiasi Cove	6	0.1%	4	0.1%	2	0.0%	43	0.9%	55	1.1%
24 Heriot Bay - Whaletown	2	0.2%	4	0.4%	0	0.0%	8	0.7%	14	1.3%
25 Port McNeill - Alert Bay - Sointula	0	0.0%	0	0.0%	0	0.0%	0	0.0%	0	0.0%
26 Skidegate - Alliford Bay	0	0.0%	0	0.0%	0	0.0%	0	0.0%	0	0.0%
☐ North	0	0.0%	6	2.2%	0	0.0%	2	0.7%	8	2.9%
10 Port Hardy - Prince Rupert	0	0.0%	0	0.0%	0	0.0%	0	0.0%	0	0.0%
11 Prince Rupert - Skidegate	0	0.0%	0	0.0%	0	0.0%	2	2.0%	2	2.0%
28 Port Hardy - Central Coast	0	0.0%	6	13.6%	0	0.0%	0	0.0%	6	13.6%
Total	57	0.1%	247	0.5%	40	0.1%	67	0.1%	411	0.8%

* Sailings provided by alternative service are not included in this report

Cancellation Cause Summary



Cancellations by Region



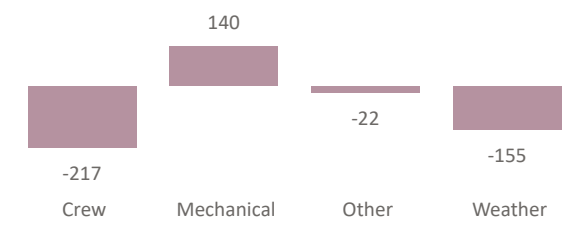
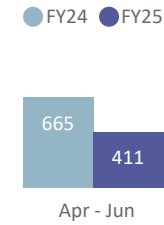
Cancellations by Quarter & Reason

YOY Total Cancellations (YTD)

YOY Comparison by Reason (YTD)

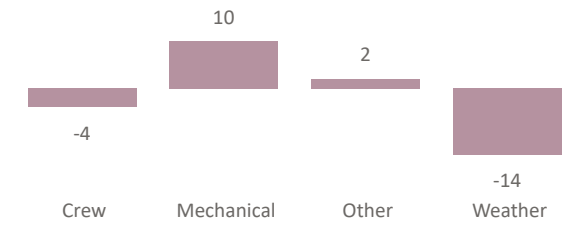
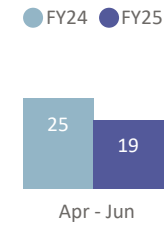
All Routes

	Apr - Jun		Jul - Sep		Oct - Dec		Jan - Mar		Total	
	Sailings	%	Sailings	%	Sailings	%	Sailings	%	Sailings	%
Crew	57	0.1%	0	0.0%	0	0.0%	0	0.0%	57	0.1%
Mechanical	247	0.5%	0	0.0%	0	0.0%	0	0.0%	247	0.5%
Other	40	0.1%	0	0.0%	0	0.0%	0	0.0%	40	0.1%
Weather	67	0.1%	0	0.0%	0	0.0%	0	0.0%	67	0.1%
Total	411	0.8%	0	0.0%	0	0.0%	0	0.0%	411	0.8%



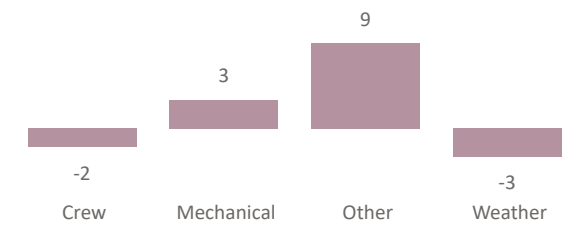
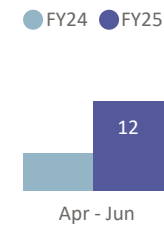
01 Tsawwassen - Swartz Bay

	Apr - Jun		Jul - Sep		Oct - Dec		Jan - Mar		Total	
	Sailings	%	Sailings	%	Sailings	%	Sailings	%	Sailings	%
Crew	0	0.0%	0	0.0%	0	0.0%	0	0.0%	0	0.0%
Mechanical	13	0.5%	0	0.0%	0	0.0%	0	0.0%	13	0.5%
Other	2	0.1%	0	0.0%	0	0.0%	0	0.0%	2	0.1%
Weather	4	0.2%	0	0.0%	0	0.0%	0	0.0%	4	0.2%
Total	19	0.8%	0	0.0%	0	0.0%	0	0.0%	19	0.8%



02 Horseshoe Bay - Nanaimo

	Apr - Jun		Jul - Sep		Oct - Dec		Jan - Mar		Total	
	Sailings	%	Sailings	%	Sailings	%	Sailings	%	Sailings	%
Crew	0	0.0%	0	0.0%	0	0.0%	0	0.0%	0	0.0%
Mechanical	3	0.2%	0	0.0%	0	0.0%	0	0.0%	3	0.2%
Other	9	0.6%	0	0.0%	0	0.0%	0	0.0%	9	0.6%
Weather	0	0.0%	0	0.0%	0	0.0%	0	0.0%	0	0.0%
Total	12	0.8%	0	0.0%	0	0.0%	0	0.0%	12	0.8%



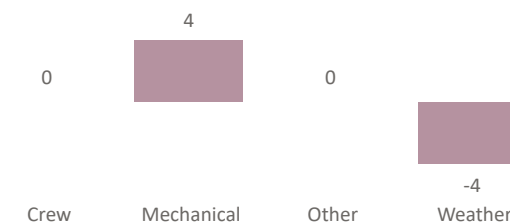
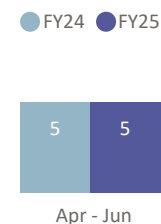
Cancellations by Quarter & Reason

YOY Total Cancellations (YTD)

YOY Comparison by Reason (YTD)

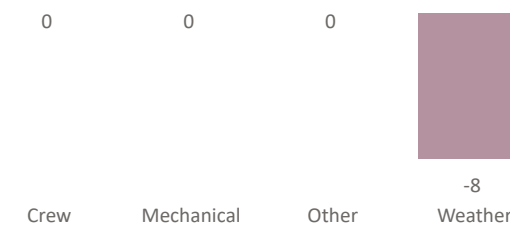
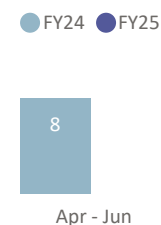
03 Horseshoe Bay - Langdale

	Apr - Jun		Jul - Sep		Oct - Dec		Jan - Mar		Total	
	Sailings	%	Sailings	%	Sailings	%	Sailings	%	Sailings	%
Crew	0	0.0%	0	0.0%	0	0.0%	0	0.0%	0	0.0%
Mechanical	4	0.3%	0	0.0%	0	0.0%	0	0.0%	4	0.3%
Other	1	0.1%	0	0.0%	0	0.0%	0	0.0%	1	0.1%
Weather	0	0.0%	0	0.0%	0	0.0%	0	0.0%	0	0.0%
Total	5	0.3%	0	0.0%	0	0.0%	0	0.0%	5	0.3%



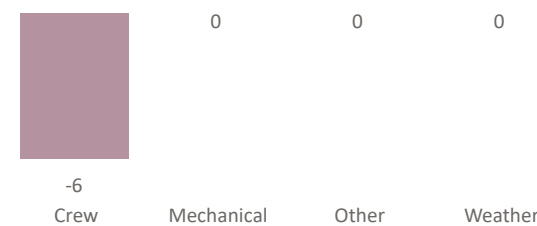
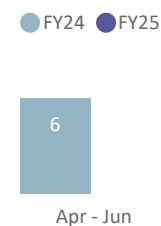
30 Nanaimo - Tsawwassen

	Apr - Jun		Jul - Sep		Oct - Dec		Jan - Mar		Total	
	Sailings	%	Sailings	%	Sailings	%	Sailings	%	Sailings	%
Crew	0	0.0%	0	0.0%	0	0.0%	0	0.0%	0	0.0%
Mechanical	0	0.0%	0	0.0%	0	0.0%	0	0.0%	0	0.0%
Other	0	0.0%	0	0.0%	0	0.0%	0	0.0%	0	0.0%
Weather	0	0.0%	0	0.0%	0	0.0%	0	0.0%	0	0.0%
Total	0	0.0%	0	0.0%	0	0.0%	0	0.0%	0	0.0%



04 Swartz Bay - Fulford Harbour

	Apr - Jun		Jul - Sep		Oct - Dec		Jan - Mar		Total	
	Sailings	%	Sailings	%	Sailings	%	Sailings	%	Sailings	%
Crew	0	0.0%	0	0.0%	0	0.0%	0	0.0%	0	0.0%
Mechanical	0	0.0%	0	0.0%	0	0.0%	0	0.0%	0	0.0%
Other	0	0.0%	0	0.0%	0	0.0%	0	0.0%	0	0.0%
Weather	0	0.0%	0	0.0%	0	0.0%	0	0.0%	0	0.0%
Total	0	0.0%	0	0.0%	0	0.0%	0	0.0%	0	0.0%



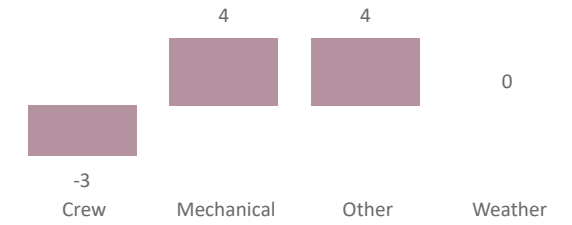
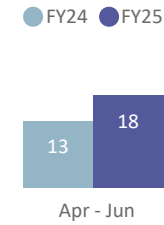
Cancellations by Quarter & Reason

YOY Total Cancellations (YTD)

YOY Comparison by Reason (YTD)

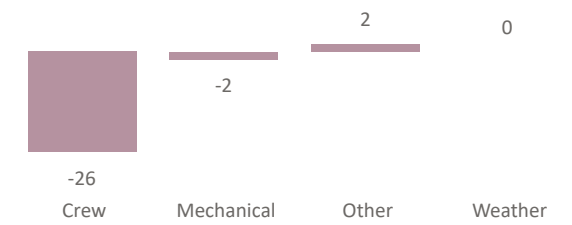
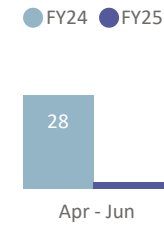
05 Swartz Bay - Southern Gulf Islands

	Apr - Jun		Jul - Sep		Oct - Dec		Jan - Mar		Total	
	Sailings	%	Sailings	%	Sailings	%	Sailings	%	Sailings	%
Crew	10	0.3%	0	0.0%	0	0.0%	0	0.0%	10	0.3%
Mechanical	4	0.1%	0	0.0%	0	0.0%	0	0.0%	4	0.1%
Other	4	0.1%	0	0.0%	0	0.0%	0	0.0%	4	0.1%
Weather	0	0.0%	0	0.0%	0	0.0%	0	0.0%	0	0.0%
Total	18	0.6%	0	0.0%	0	0.0%	0	0.0%	18	0.6%



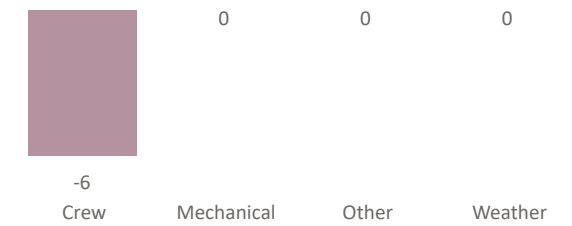
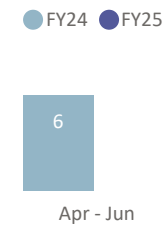
06 Crofton - Vesuvius

	Apr - Jun		Jul - Sep		Oct - Dec		Jan - Mar		Total	
	Sailings	%	Sailings	%	Sailings	%	Sailings	%	Sailings	%
Crew	0	0.0%	0	0.0%	0	0.0%	0	0.0%	0	0.0%
Mechanical	0	0.0%	0	0.0%	0	0.0%	0	0.0%	0	0.0%
Other	2	0.1%	0	0.0%	0	0.0%	0	0.0%	2	0.1%
Weather	0	0.0%	0	0.0%	0	0.0%	0	0.0%	0	0.0%
Total	2	0.1%	0	0.0%	0	0.0%	0	0.0%	2	0.1%



07 Earls Cove - Saltery Bay

	Apr - Jun		Jul - Sep		Oct - Dec		Jan - Mar		Total	
	Sailings	%	Sailings	%	Sailings	%	Sailings	%	Sailings	%
Crew	0	0.0%	0	0.0%	0	0.0%	0	0.0%	0	0.0%
Mechanical	0	0.0%	0	0.0%	0	0.0%	0	0.0%	0	0.0%
Other	0	0.0%	0	0.0%	0	0.0%	0	0.0%	0	0.0%
Weather	0	0.0%	0	0.0%	0	0.0%	0	0.0%	0	0.0%
Total	0	0.0%	0	0.0%	0	0.0%	0	0.0%	0	0.0%



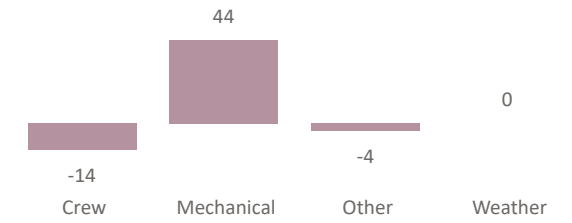
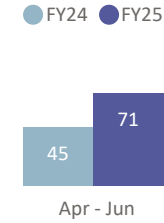
Cancellations by Quarter & Reason

YOY Total Cancellations (YTD)

YOY Comparison by Reason (YTD)

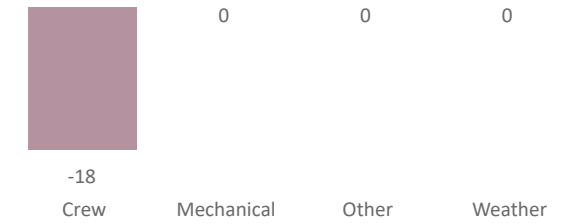
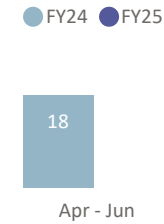
08 Horseshoe Bay - Snug Cove

	Apr - Jun		Jul - Sep		Oct - Dec		Jan - Mar		Total	
	Sailings	%	Sailings	%	Sailings	%	Sailings	%	Sailings	%
Crew	5	0.2%	0	0.0%	0	0.0%	0	0.0%	5	0.2%
Mechanical	52	1.9%	0	0.0%	0	0.0%	0	0.0%	52	1.9%
Other	14	0.5%	0	0.0%	0	0.0%	0	0.0%	14	0.5%
Weather	0	0.0%	0	0.0%	0	0.0%	0	0.0%	0	0.0%
Total	71	2.6%	0	0.0%	0	0.0%	0	0.0%	71	2.6%



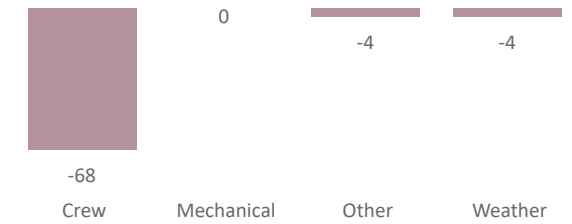
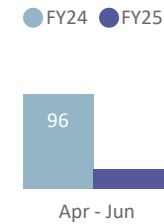
09 Tsawwassen - Southern Gulf Islands

	Apr - Jun		Jul - Sep		Oct - Dec		Jan - Mar		Total	
	Sailings	%	Sailings	%	Sailings	%	Sailings	%	Sailings	%
Crew	0	0.0%	0	0.0%	0	0.0%	0	0.0%	0	0.0%
Mechanical	0	0.0%	0	0.0%	0	0.0%	0	0.0%	0	0.0%
Other	0	0.0%	0	0.0%	0	0.0%	0	0.0%	0	0.0%
Weather	0	0.0%	0	0.0%	0	0.0%	0	0.0%	0	0.0%
Total	0	0.0%	0	0.0%	0	0.0%	0	0.0%	0	0.0%



12 Brentwood Bay - Mill Bay

	Apr - Jun		Jul - Sep		Oct - Dec		Jan - Mar		Total	
	Sailings	%	Sailings	%	Sailings	%	Sailings	%	Sailings	%
Crew	16	1.0%	0	0.0%	0	0.0%	0	0.0%	16	1.0%
Mechanical	0	0.0%	0	0.0%	0	0.0%	0	0.0%	0	0.0%
Other	2	0.1%	0	0.0%	0	0.0%	0	0.0%	2	0.1%
Weather	2	0.1%	0	0.0%	0	0.0%	0	0.0%	2	0.1%
Total	20	1.2%	0	0.0%	0	0.0%	0	0.0%	20	1.2%



Cancellations by Quarter & Reason

YOY Total Cancellations (YTD)

YOY Comparison by Reason (YTD)

13 Langdale - Gambier Island - Keats Landing

	Apr - Jun		Jul - Sep		Oct - Dec		Jan - Mar		Total	
	Sailings	%	Sailings	%	Sailings	%	Sailings	%	Sailings	%
Crew	0	0.0%	0	0.0%	0	0.0%	0	0.0%	0	0.0%
Mechanical	0	0.0%	0	0.0%	0	0.0%	0	0.0%	0	0.0%
Other	0	0.0%	0	0.0%	0	0.0%	0	0.0%	0	0.0%
Weather	0	0.0%	0	0.0%	0	0.0%	0	0.0%	0	0.0%
Total	0	0.0%	0	0.0%	0	0.0%	0	0.0%	0	0.0%

FY24 FY25

Apr - Jun



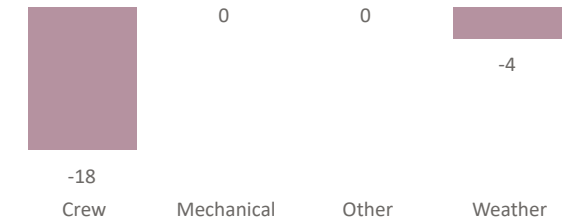
17 Little River - Powell River

	Apr - Jun		Jul - Sep		Oct - Dec		Jan - Mar		Total	
	Sailings	%	Sailings	%	Sailings	%	Sailings	%	Sailings	%
Crew	0	0.0%	0	0.0%	0	0.0%	0	0.0%	0	0.0%
Mechanical	0	0.0%	0	0.0%	0	0.0%	0	0.0%	0	0.0%
Other	0	0.0%	0	0.0%	0	0.0%	0	0.0%	0	0.0%
Weather	0	0.0%	0	0.0%	0	0.0%	0	0.0%	0	0.0%
Total	0	0.0%	0	0.0%	0	0.0%	0	0.0%	0	0.0%

FY24 FY25

22

Apr - Jun



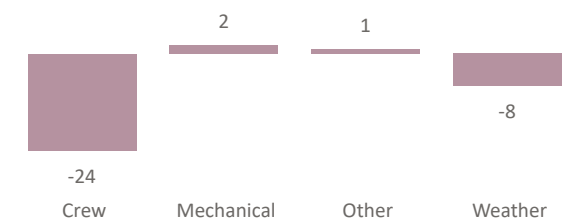
18 Powell River - Blubber Bay

	Apr - Jun		Jul - Sep		Oct - Dec		Jan - Mar		Total	
	Sailings	%	Sailings	%	Sailings	%	Sailings	%	Sailings	%
Crew	2	0.1%	0	0.0%	0	0.0%	0	0.0%	2	0.1%
Mechanical	51	3.5%	0	0.0%	0	0.0%	0	0.0%	51	3.5%
Other	2	0.1%	0	0.0%	0	0.0%	0	0.0%	2	0.1%
Weather	2	0.1%	0	0.0%	0	0.0%	0	0.0%	2	0.1%
Total	57	3.9%	0	0.0%	0	0.0%	0	0.0%	57	3.9%

FY24 FY25

57

Apr - Jun



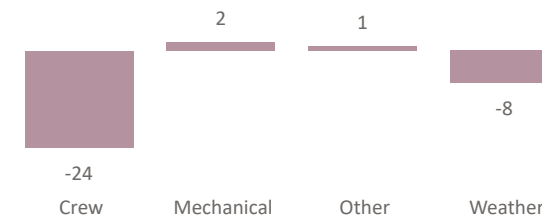
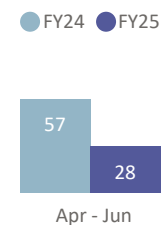
Cancellations by Quarter & Reason

YOY Total Cancellations (YTD)

YOY Comparison by Reason (YTD)

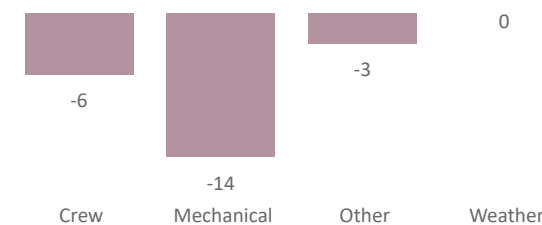
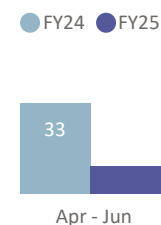
19 Nanaimo Harbour - Gabriola

	Apr - Jun		Jul - Sep		Oct - Dec		Jan - Mar		Total	
	Sailings	%	Sailings	%	Sailings	%	Sailings	%	Sailings	%
Crew	9	0.2%	0	0.0%	0	0.0%	0	0.0%	9	0.2%
Mechanical	17	0.4%	0	0.0%	0	0.0%	0	0.0%	17	0.4%
Other	2	0.0%	0	0.0%	0	0.0%	0	0.0%	2	0.0%
Weather	0	0.0%	0	0.0%	0	0.0%	0	0.0%	0	0.0%
Total	28	0.7%	0	0.0%	0	0.0%	0	0.0%	28	0.7%



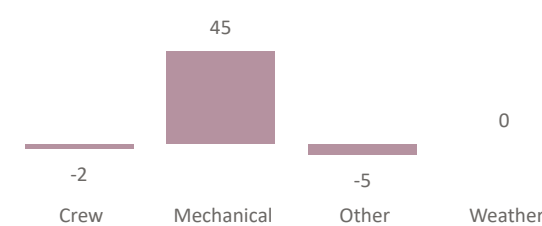
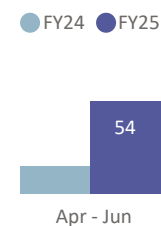
20 Chemainus - Thetis - Penelakut

	Apr - Jun		Jul - Sep		Oct - Dec		Jan - Mar		Total	
	Sailings	%	Sailings	%	Sailings	%	Sailings	%	Sailings	%
Crew	4	0.1%	0	0.0%	0	0.0%	0	0.0%	4	0.1%
Mechanical	6	0.2%	0	0.0%	0	0.0%	0	0.0%	6	0.2%
Other	0	0.0%	0	0.0%	0	0.0%	0	0.0%	0	0.0%
Weather	0	0.0%	0	0.0%	0	0.0%	0	0.0%	0	0.0%
Total	10	0.4%	0	0.0%	0	0.0%	0	0.0%	10	0.4%



21 Buckley Bay - Denman West

	Apr - Jun		Jul - Sep		Oct - Dec		Jan - Mar		Total	
	Sailings	%	Sailings	%	Sailings	%	Sailings	%	Sailings	%
Crew	1	0.0%	0	0.0%	0	0.0%	0	0.0%	1	0.0%
Mechanical	53	1.6%	0	0.0%	0	0.0%	0	0.0%	53	1.6%
Other	0	0.0%	0	0.0%	0	0.0%	0	0.0%	0	0.0%
Weather	0	0.0%	0	0.0%	0	0.0%	0	0.0%	0	0.0%
Total	54	1.7%	0	0.0%	0	0.0%	0	0.0%	54	1.7%



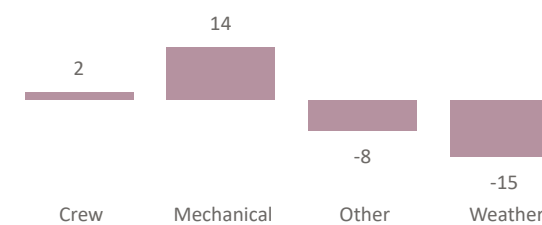
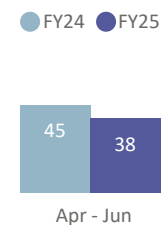
Cancellations by Quarter & Reason

YOY Total Cancellations (YTD)

YOY Comparison by Reason (YTD)

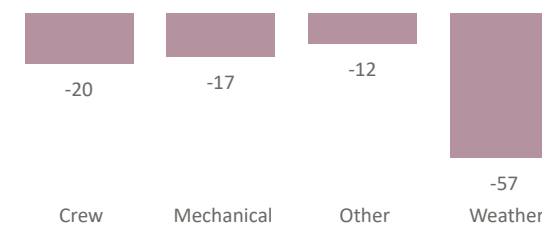
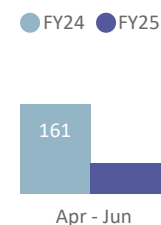
22 Denman East - Hornby Island

	Apr - Jun		Jul - Sep		Oct - Dec		Jan - Mar		Total	
	Sailings	%	Sailings	%	Sailings	%	Sailings	%	Sailings	%
Crew	2	0.1%	0	0.0%	0	0.0%	0	0.0%	2	0.1%
Mechanical	30	1.4%	0	0.0%	0	0.0%	0	0.0%	30	1.4%
Other	0	0.0%	0	0.0%	0	0.0%	0	0.0%	0	0.0%
Weather	6	0.3%	0	0.0%	0	0.0%	0	0.0%	6	0.3%
Total	38	1.7%	0	0.0%	0	0.0%	0	0.0%	38	1.7%



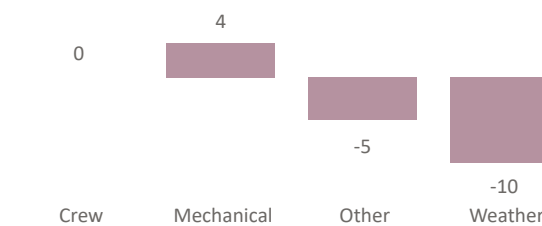
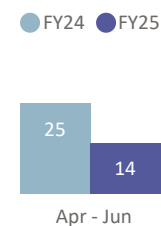
23 Campbell River - Quathiaski Cove

	Apr - Jun		Jul - Sep		Oct - Dec		Jan - Mar		Total	
	Sailings	%	Sailings	%	Sailings	%	Sailings	%	Sailings	%
Crew	6	0.1%	0	0.0%	0	0.0%	0	0.0%	6	0.1%
Mechanical	4	0.1%	0	0.0%	0	0.0%	0	0.0%	4	0.1%
Other	2	0.0%	0	0.0%	0	0.0%	0	0.0%	2	0.0%
Weather	43	0.9%	0	0.0%	0	0.0%	0	0.0%	43	0.9%
Total	55	1.1%	0	0.0%	0	0.0%	0	0.0%	55	1.1%



24 Heriot Bay - Whaletown

	Apr - Jun		Jul - Sep		Oct - Dec		Jan - Mar		Total	
	Sailings	%	Sailings	%	Sailings	%	Sailings	%	Sailings	%
Crew	2	0.2%	0	0.0%	0	0.0%	0	0.0%	2	0.2%
Mechanical	4	0.4%	0	0.0%	0	0.0%	0	0.0%	4	0.4%
Other	0	0.0%	0	0.0%	0	0.0%	0	0.0%	0	0.0%
Weather	8	0.7%	0	0.0%	0	0.0%	0	0.0%	8	0.7%
Total	14	1.3%	0	0.0%	0	0.0%	0	0.0%	14	1.3%



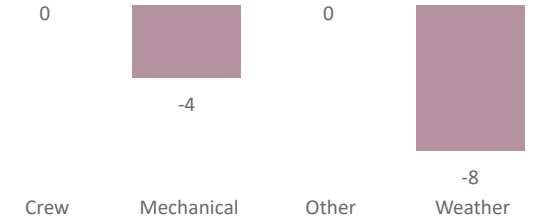
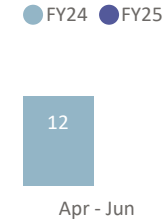
Cancellations by Quarter & Reason

YOY Total Cancellations (YTD)

YOY Comparison by Reason (YTD)

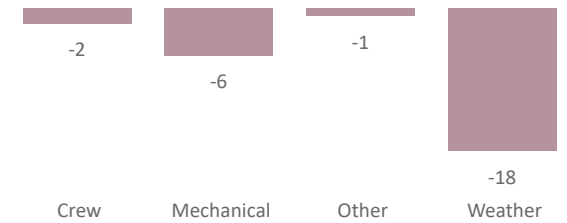
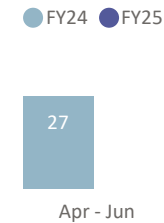
25 Port McNeill - Alert Bay - Sointula

	Apr - Jun		Jul - Sep		Oct - Dec		Jan - Mar		Total	
	Sailings	%	Sailings	%	Sailings	%	Sailings	%	Sailings	%
Crew	0	0.0%	0	0.0%	0	0.0%	0	0.0%	0	0.0%
Mechanical	0	0.0%	0	0.0%	0	0.0%	0	0.0%	0	0.0%
Other	0	0.0%	0	0.0%	0	0.0%	0	0.0%	0	0.0%
Weather	0	0.0%	0	0.0%	0	0.0%	0	0.0%	0	0.0%
Total	0	0.0%	0	0.0%	0	0.0%	0	0.0%	0	0.0%



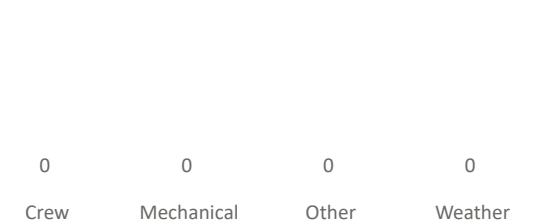
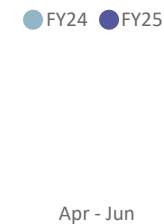
26 Skidegate - Alliford Bay

	Apr - Jun		Jul - Sep		Oct - Dec		Jan - Mar		Total	
	Sailings	%	Sailings	%	Sailings	%	Sailings	%	Sailings	%
Crew	0	0.0%	0	0.0%	0	0.0%	0	0.0%	0	0.0%
Mechanical	0	0.0%	0	0.0%	0	0.0%	0	0.0%	0	0.0%
Other	0	0.0%	0	0.0%	0	0.0%	0	0.0%	0	0.0%
Weather	0	0.0%	0	0.0%	0	0.0%	0	0.0%	0	0.0%
Total	0	0.0%	0	0.0%	0	0.0%	0	0.0%	0	0.0%



10 Port Hardy - Prince Rupert

	Apr - Jun		Jul - Sep		Oct - Dec		Jan - Mar		Total	
	Sailings	%	Sailings	%	Sailings	%	Sailings	%	Sailings	%
Crew	0	0.0%	0	0.0%	0	0.0%	0	0.0%	0	0.0%
Mechanical	0	0.0%	0	0.0%	0	0.0%	0	0.0%	0	0.0%
Other	0	0.0%	0	0.0%	0	0.0%	0	0.0%	0	0.0%
Weather	0	0.0%	0	0.0%	0	0.0%	0	0.0%	0	0.0%
Total	0	0.0%	0	0.0%	0	0.0%	0	0.0%	0	0.0%



Cancellations by Quarter & Reason

YOY Total Cancellations (YTD)

YOY Comparison by Reason (YTD)

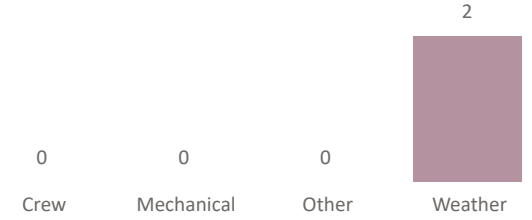
11 Prince Rupert - Skidegate

	Apr - Jun		Jul - Sep		Oct - Dec		Jan - Mar		Total	
	Sailings	%	Sailings	%	Sailings	%	Sailings	%	Sailings	%
Crew	0	0.0%	0	0.0%	0	0.0%	0	0.0%	0	0.0%
Mechanical	0	0.0%	0	0.0%	0	0.0%	0	0.0%	0	0.0%
Other	0	0.0%	0	0.0%	0	0.0%	0	0.0%	0	0.0%
Weather	2	2.0%	0	0.0%	0	0.0%	0	0.0%	2	2.0%
Total	2	2.0%	0	0.0%	0	0.0%	0	0.0%	2	2.0%

FY24 FY25



Apr - Jun



28 Port Hardy - Central Coast

	Apr - Jun		Jul - Sep		Oct - Dec		Jan - Mar		Total	
	Sailings	%	Sailings	%	Sailings	%	Sailings	%	Sailings	%
Crew	0	0.0%	0	0.0%	0	0.0%	0	0.0%	0	0.0%
Mechanical	6	13.6%	0	0.0%	0	0.0%	0	0.0%	6	13.6%
Other	0	0.0%	0	0.0%	0	0.0%	0	0.0%	0	0.0%
Weather	0	0.0%	0	0.0%	0	0.0%	0	0.0%	0	0.0%
Total	6	13.6%	0	0.0%	0	0.0%	0	0.0%	6	13.6%

FY24 FY25



Apr - Jun

